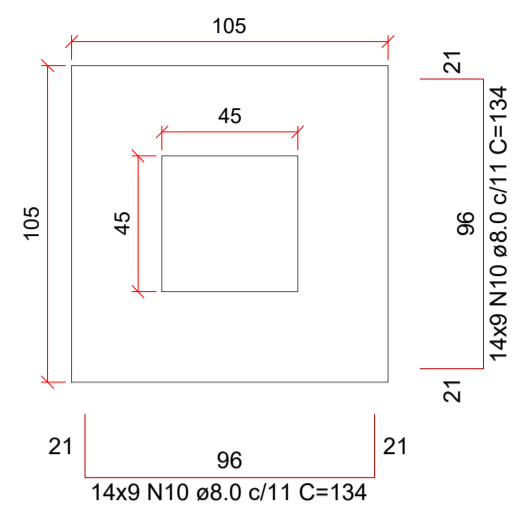
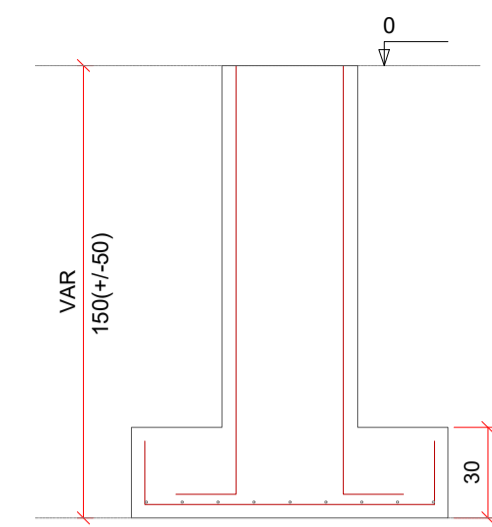


S1=S2=S3=S4=S9=S10=S11=S15=S16=S18=S19
=S20=S21=S22

PLANTA ESC 1:25

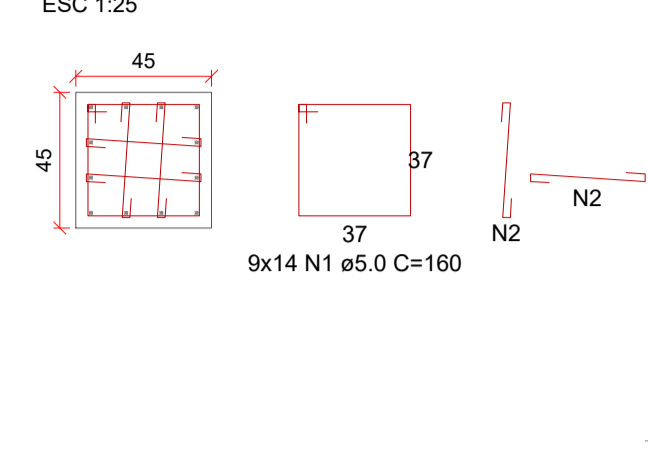


CORTE ESC 1:25



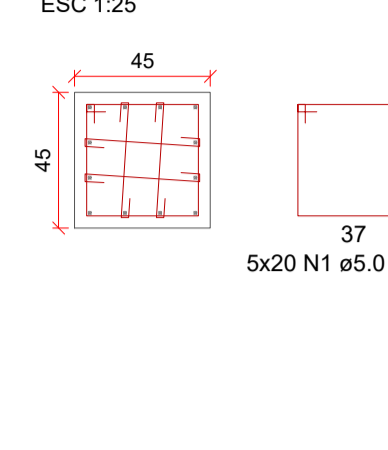
P1=P2=P3=P4=P11=P18=P19=P20=P22

BALDRAME - L1 ESC 1:25



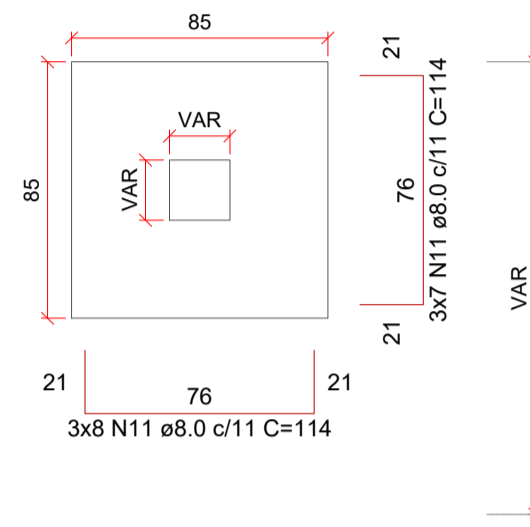
P9=P10=P15=P16=P21

BALDRAME - L1 ESC 1:25

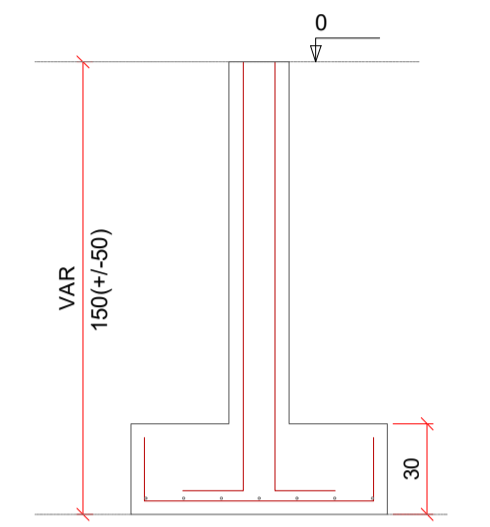


S5=S6=S13

PLANTA ESC 1:25

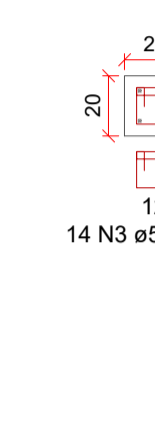


CORTE ESC 1:25



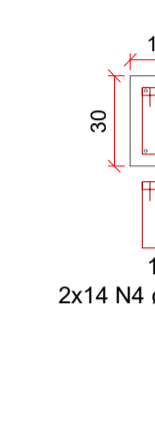
P13

BALDRAME - L1 ESC 1:25



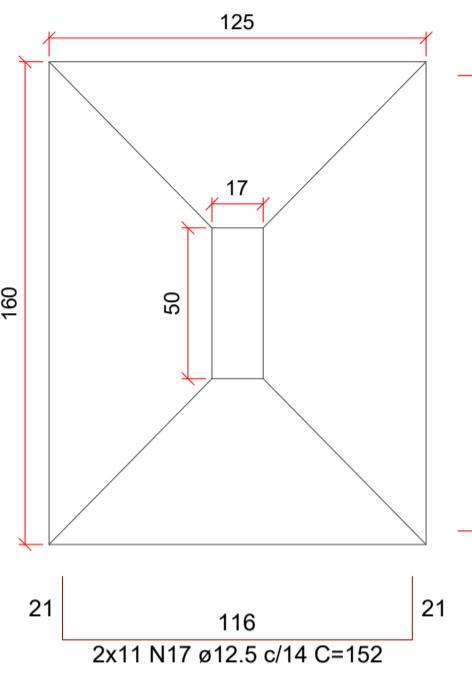
P5=P6

BALDRAME - L1 ESC 1:25

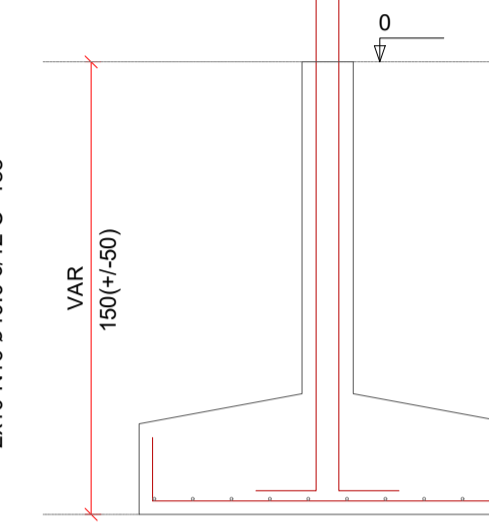


S7=S8

PLANTA ESC 1:25

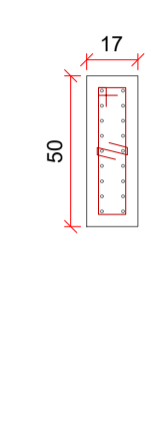


CORTE ESC 1:25



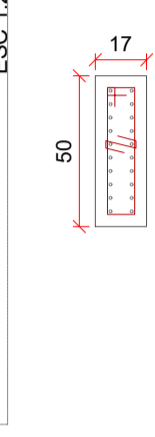
P7

BALDRAME - L1 ESC 1:25



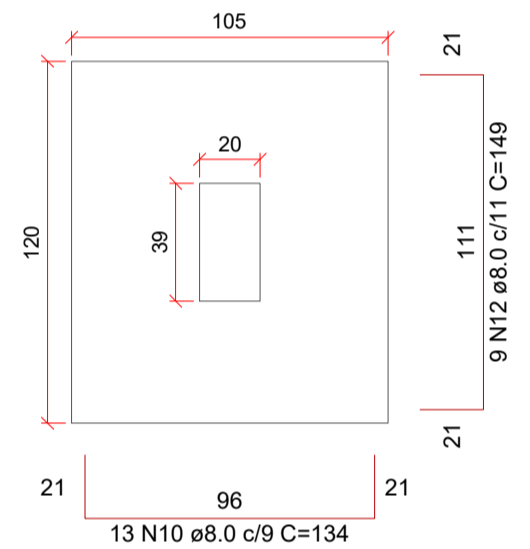
P8

BALDRAME - L1 ESC 1:25

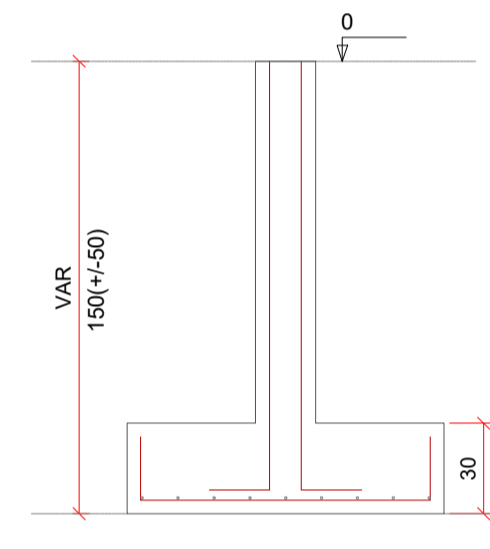


S12

PLANTA ESC 1:25

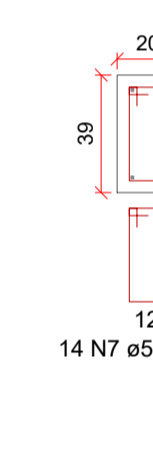


CORTE ESC 1:25



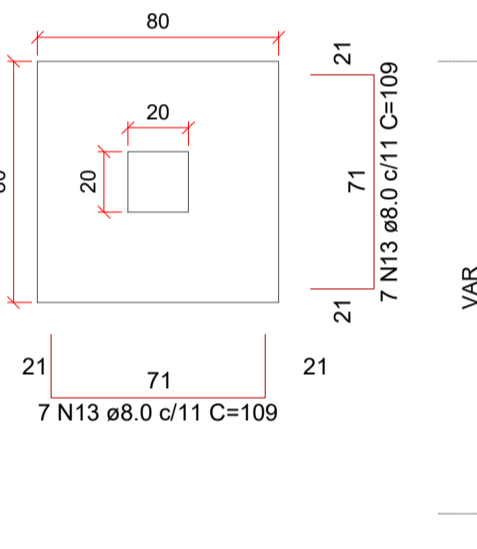
P12

BALDRAME - L1 ESC 1:25

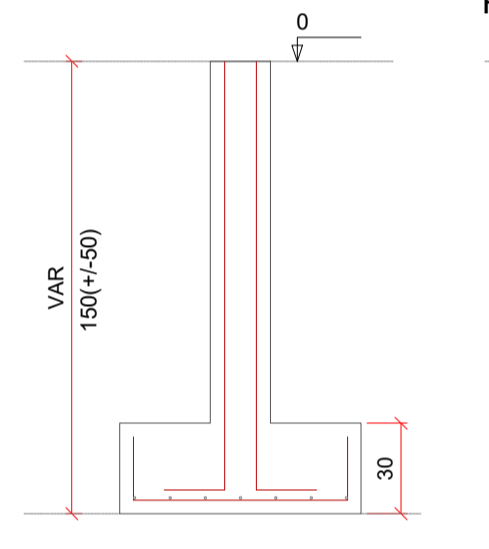


S14

PLANTA ESC 1:25

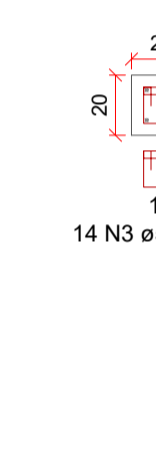


CORTE ESC 1:25



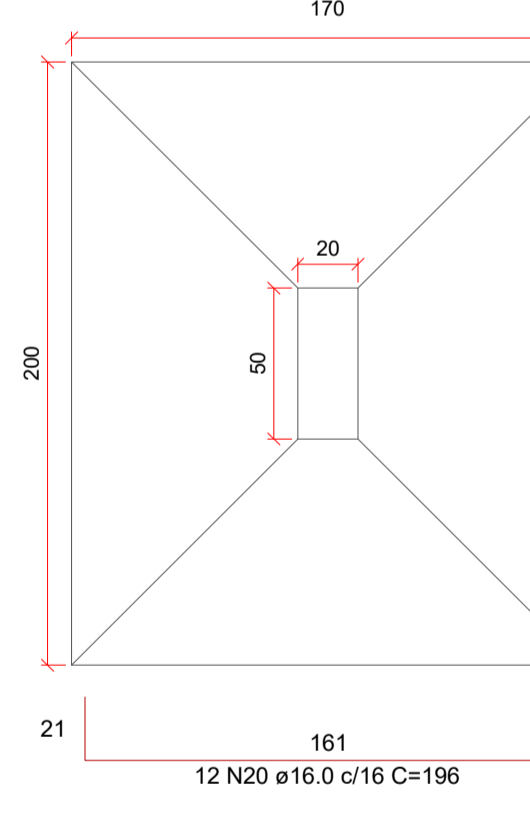
P14

BALDRAME - L1 ESC 1:25

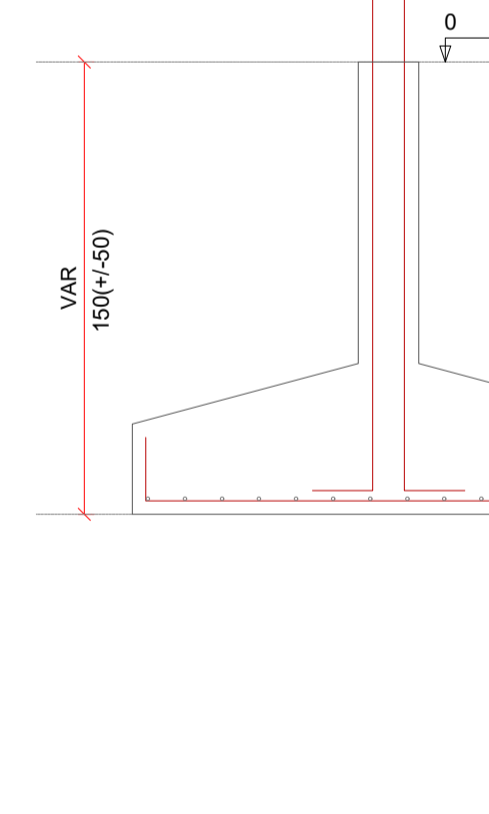


S17

PLANTA ESC 1:25

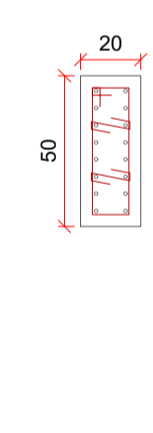


CORTE ESC 1:25



P17

BALDRAME - L1 ESC 1:25



1 ARMAÇÃO DAS SAPATAS ESCALA 1:25

Relação do aço

ACO	N	DIAM (mm)	QUANT	C.UNIT (cm)	C.TOTAL (cm)
CA60	1	5.0	226	160	36160
	2	5.0	904	52	47008
	3	5.0	28	60	1680
	4	5.0	28	78	2184
	5	5.0	28	114	3192
	6	5.0	28	24	672
	7	5.0	14	98	1372
	8	5.0	11	120	1320
	9	5.0	22	27	594
CA50	10	8.0	265	134	35510
	11	8.0	45	114	5130
	12	8.0	9	149	1341
	13	8.0	14	109	1526
	14	10.0	180	VAR	VAR
	15	10.0	46	VAR	VAR
	16	10.0	20	188	3760
	17	12.5	22	152	3344
	18	12.5	16	VAR	VAR
	19	12.5	14	227	3178
	20	16.0	12	196	2352

Resumo do aço

ACO	DIAM (mm)	C.TOTAL (m)	PESO + 10% (kg)
CA50	8.0	435.1	188.8
	10.0	416.8	282.6
	12.5	98.9	104.7
	16.0	23.6	40.8
CA60	5.0	941.9	159.7
PESO TOTAL (kg)			
CA50		617	
CA60		159.7	

Volume de concreto (C-25) = 13.57 m³
Área de forma = 79.68 m²

Quantitativos Totais do Centro Administrativo

ACO	DIAM (mm)	C.TOTAL (m)	PESO + 10% (kg)
CA50	6.3	6524.7	1756.3
	8.0	1746.4	758
	10.0	1851.9	1255.9
	12.5	943.4	363.8
	16.0	116	201.3
CA60	5.0	3787	642.1
PESO TOTAL (kg)			
CA50		4335.2	
CA60		642.1	

Volume de concreto (C-25) = 108.13 m³
Volume de concreto (Groute) = 2.95 m³
Área de forma = 558.42 m²

C		D	
B		F	
A	ALT.BMC	MAR/2017	E
O REV	EM ORIGINAL	DEZ/2016	D
N°	REVISÃO	DATA	N° REVISÃO DATA
MPB SANEAMENTO LTDA JANSANA DE LA VILLA DE PAUW ARCHITECTES Rua Felipe Schmidt, 649, Sala 204 Centro Administrativo, CEP: 63020-000, Teresina - PI, Fone: +55 33253682 CREA: 13887-0/2012 - Arquiteto - SC www.jansana.com.br		PROJETO DESENHO CONFERIDO APROVAÇÃO	DATA DATA DATA DATA
ASSINATURA CREA-N°		APROVADO Nº DA CONSULTORIA DE-13017-EDF-EDP-EST-012-A	
PREFEITURA MUNICIPAL DE TERESINA - PI TERESINA - PI PROJETOS BÁSICOS E EXECUTIVOS DAS OBRAS DE REQUALIFICAÇÃO URBANA E AMBIENTAL DAS ÁREAS 2,3 E 4, INCLUINDO PLANO DE REASSENTAMENTO, DO MUNICÍPIO DE TERESINA - PI RP5 - PROJETO ESTRUTURAL EXECUTIVO EDIFÍCIO ADMINISTRATIVO SEM BAR ARMAÇÃO DAS SAPATAS			
PROJETO	VISTOS	DESENHO	DATA
CONDOMÍNIO TERESINA SUSTENTÁVEL		WV	02/05/2016
ESCALA			DATA TGP: 02/05/2016
1/50			FOLHA N° 5/12