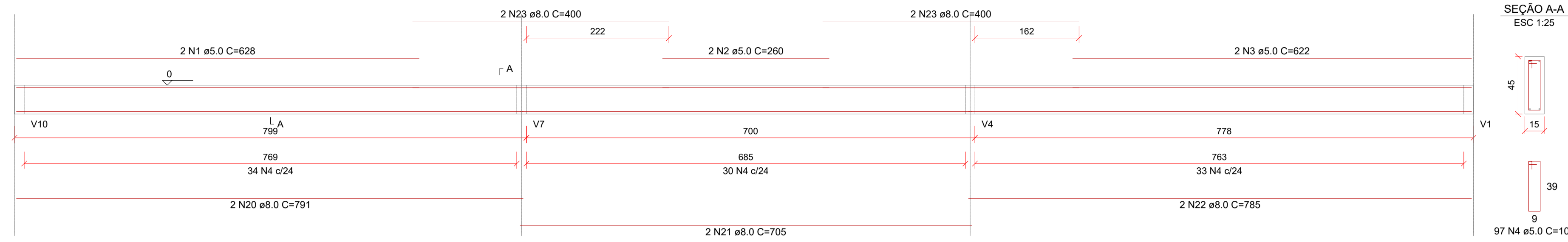


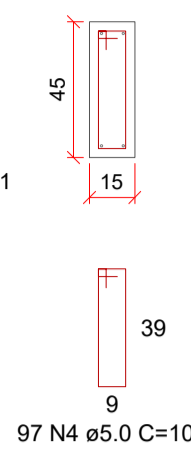
V11 (15 x 45)

ESC 1:50



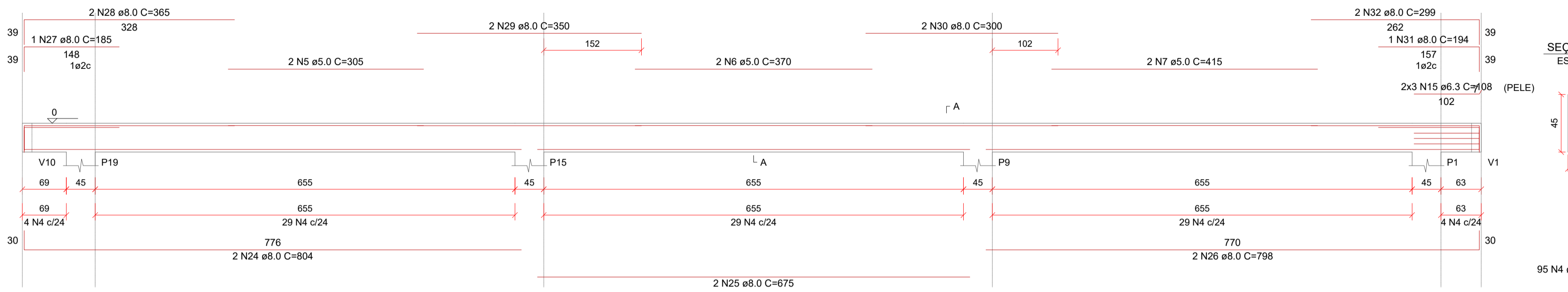
SEÇÃO A-A

ESC 1:25



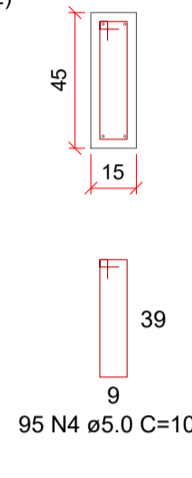
V12 (15 x 45)

ESC 1:50



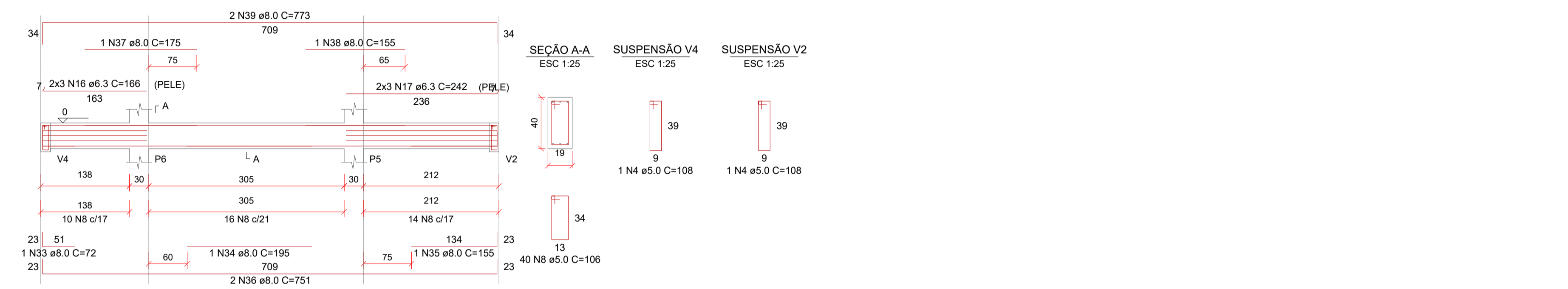
SEÇÃO A-A

ESC 1:25



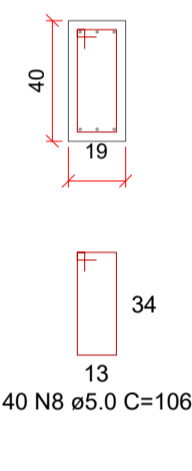
V13 (19 x 40)

ESC 1:50



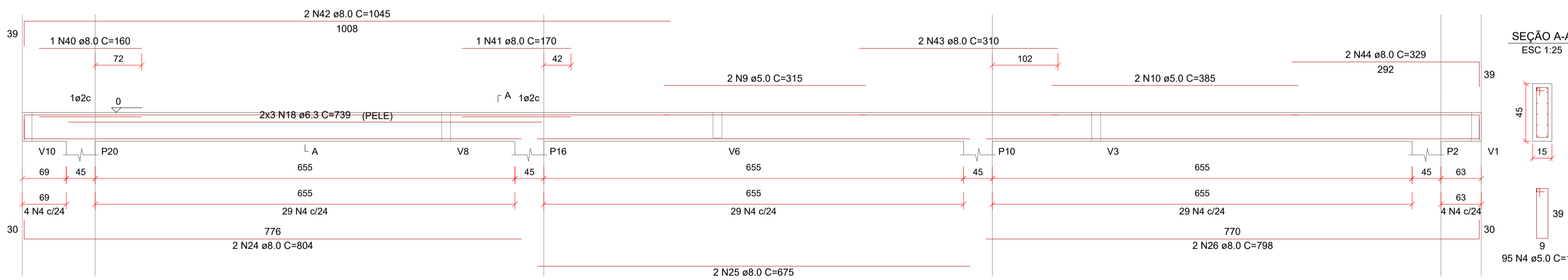
SEÇÃO A-A

ESC 1:25



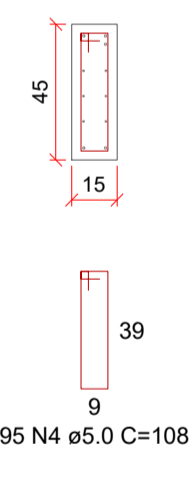
V14 (15 x 45)

ESC 1:50



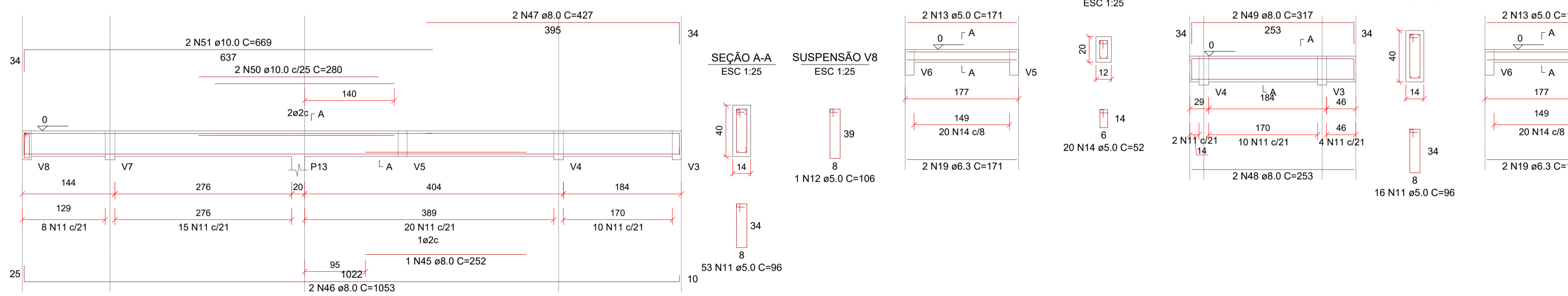
SEÇÃO A-A

ESC 1:25



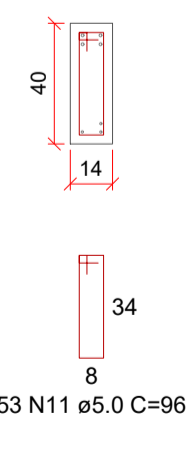
V15 (14 x 40)

ESC 1:50



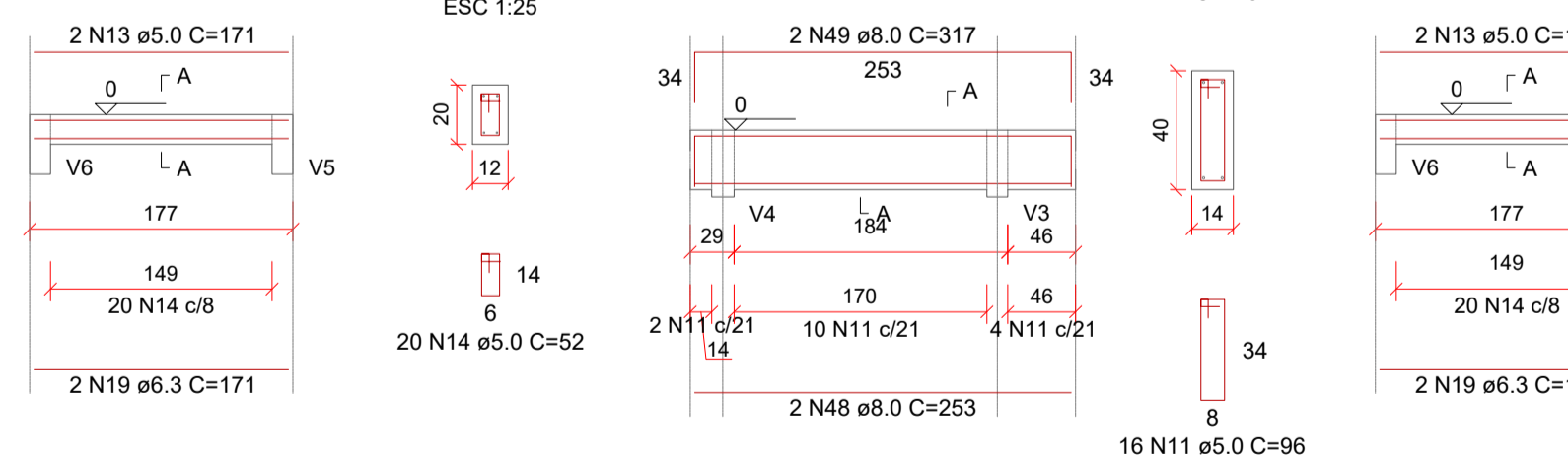
SEÇÃO A-A

ESC 1:25



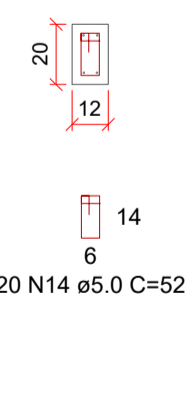
V16 (12 x 20)

ESC 1:50



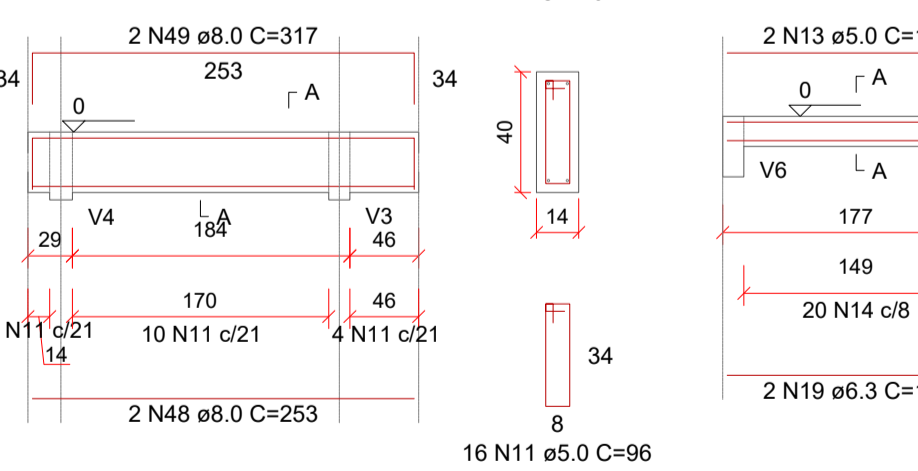
SEÇÃO A-A

ESC 1:25



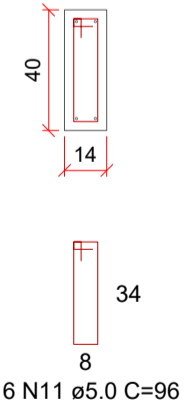
V17 (14 x 40)

ESC 1:50



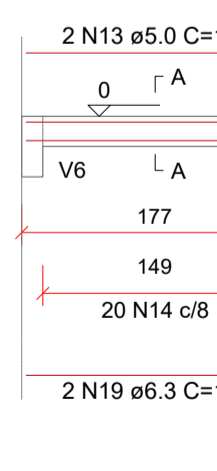
SEÇÃO A-A

ESC 1:25



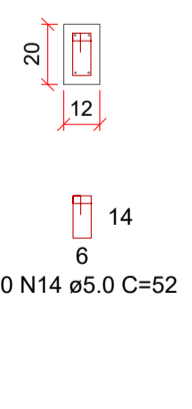
V18 (12 x 20)

ESC 1:50



SEÇÃO A-A

ESC 1:25



Relação do aço

AÇO	N	DIAM (mm)	QUANT	C.UNIT (cm)	C.TOTAL (cm)
CA60	1	5.0	2	628	1256
	2	5.0	2	280	520
	3	5.0	2	622	1244
	4	5.0	289	108	31212
	5	5.0	2	305	610
	6	5.0	2	370	740
	7	5.0	2	415	830
	8	5.0	40	106	4240
	9	5.0	2	315	630
	10	5.0	2	385	770
	11	5.0	69	96	6624
	12	5.0	1	106	106
	13	5.0	4	171	684
	14	5.0	40	52	2080
	15	6.3	6	108	648
	16	6.3	6	166	996
	17	6.3	6	242	1452
	18	6.3	6	739	4434
	19	6.3	4	791	684
	20	8.0	2	791	1582
	21	8.0	2	705	1410
	22	8.0	2	785	1570
	23	8.0	4	400	1600
	24	8.0	4	804	3216
	25	8.0	4	675	2700
	26	8.0	4	798	3192
	27	8.0	1	185	185
	28	8.0	2	365	730
	29	8.0	2	350	700
	30	8.0	2	300	600
	31	8.0	1	194	194
	32	8.0	2	299	598
	33	8.0	1	72	72
	34	8.0	1	195	195
	35	8.0	1	155	155
	36	8.0	2	751	1502
	37	8.0	1	175	175
	38	8.0	1	155	155
	39	8.0	2	773	1546
	40	8.0	1	160	160
	41	8.0	1	170	170
	42	8.0	2	1045	2090
	43	8.0	2	310	620
	44	8.0	2	329	658
	45	8.0	1	252	252
	46	8.0	2	1053	2106
	47	8.0	2	427	854
	48	8.0	2	253	506
	49	8.0	2	317	634
	50	10.0	2	280	560
	51	10.0	2	689	1338

Resumo do aço

AÇO	DIAM (mm)	C.TOTAL (m)	PESO + 10% (kg)
CA50	6.3	82.2	22.1
	8.0	301.3	130.8
	10.0	19	12.9
CA60	5.0	515.5	87.4
PESO TOTAL (kg)			
CA50		165.7	
CA60		87.4	

Volume de concreto (C-25) = 5.96 m³
Área de forma = 92.73 m²

C		D			
B		F			
A	ALT.BMC	MAO/2017	E		
D	EM.ORIGINAL		D		
N°	REVISÃO	DATA	N°	REVISÃO	DATA
			PROJETO		DATA
			DESENHO		DATA
			CONFERRIDO		DATA
APROVAÇÃO			APROVADO		DATA
DATA	ASSINATURA		Nº DA CONSULTORA DE-13017-EDF-EDP-EST-015-A		
PREFEITURA MUNICIPAL DE TERESINA - PI TERESINA - PI PROJETOS BÁSICOS E EXECUTIVOS DAS OBRAS DE REQUALIFICAÇÃO URBANA E AMBIENTAL DAS ÁREAS 2,3 E 4, INCLUINDO PLANO DE REASSENTAMENTO, DO MUNICÍPIO DE TERESINA - PI RP5 - PROJETO ESTRUTURAL EXECUTIVO EDIFÍCIO ADMINISTRATIVO SEM BAR ARMAÇÃO VIGAS DE BALDRAME					
PROJETO	CONDOMÍNIO TERESINA SUSTENTÁVEL	VISTOS	DESENHO	DATA	FOLHA N°
ESCALA	1/50			02/2016 02/2016	8/12