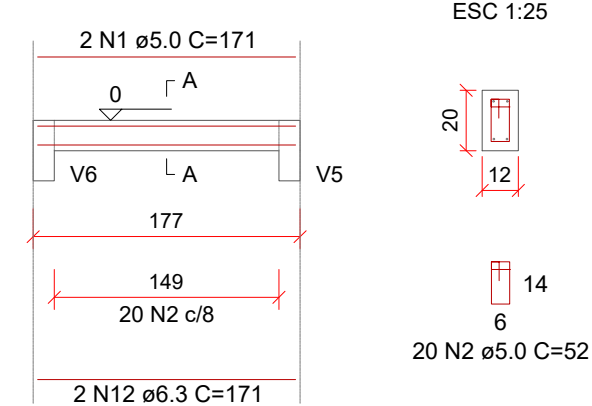
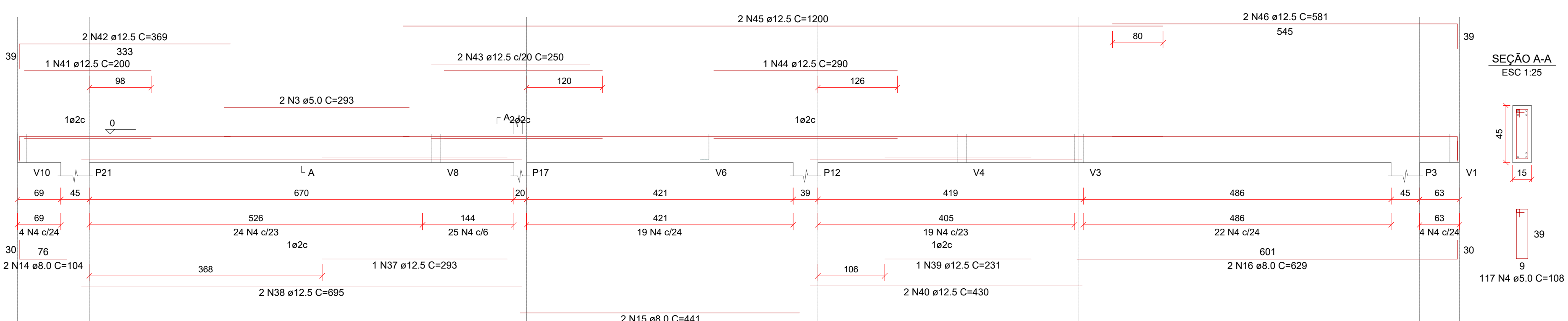


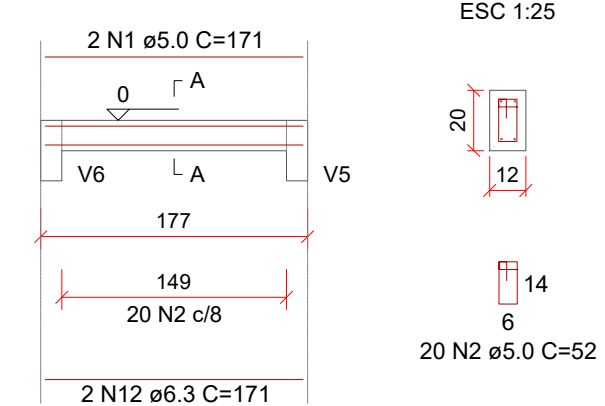
**V19 (12 x 20)**  
ESC 1:50



**V20 (15 x 45)**  
ESC 1:50



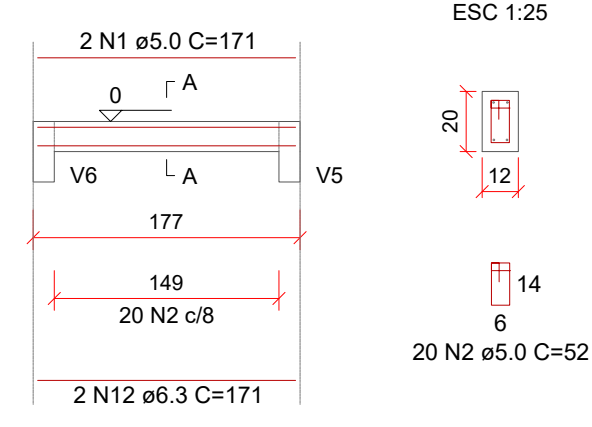
**V21 (12 x 20)**  
ESC 1:50



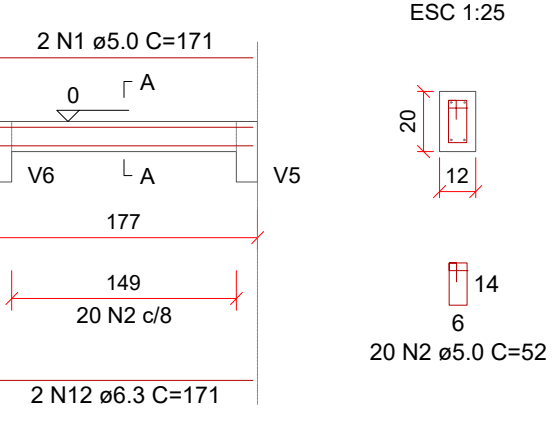
**Relação do aço**

ACO	N	DIAM (mm)	QUANT	C.UNIT (cm)	C.TOTAL (cm)
CA60	1	5.0	8	171	1368
	2	5.0	80	52	4160
	3	5.0	2	293	586
	4	5.0	309	108	33372
	5	5.0	69	96	6624
	6	5.0	1	106	106
	7	5.0	2	335	670
	8	5.0	2	310	620
	9	5.0	2	628	1256
	10	5.0	2	260	520
	11	5.0	2	607	1214
	12	6.3	8	171	1368
	13	6.3	6	739	4434
	14	8.0	2	104	208
	15	8.0	2	441	882
	16	8.0	2	629	1258
	17	8.0	2	253	506
	18	8.0	2	317	634
	19	8.0	1	252	252
	20	8.0	2	1053	2106
	21	8.0	2	220	440
	22	8.0	2	1086	2172
	23	8.0	2	804	1608
	24	8.0	2	675	1350
	25	8.0	2	798	1596
	26	8.0	1	220	220
	27	8.0	2	170	340
	28	8.0	2	1025	2050
	29	8.0	2	355	710
	30	8.0	1	219	219
	31	8.0	2	359	718
	32	8.0	2	791	1582
	33	8.0	2	705	1410
	34	8.0	2	785	1570
	35	8.0	2	400	800
	36	8.0	2	415	830
	37	12.5	1	293	293
	38	12.5	2	695	1390
	39	12.5	1	231	231
	40	12.5	2	430	860
	41	12.5	1	200	200
	42	12.5	2	369	738
	43	12.5	2	250	500
	44	12.5	1	290	290
	45	12.5	2	1200	2400
	46	12.5	2	581	1162

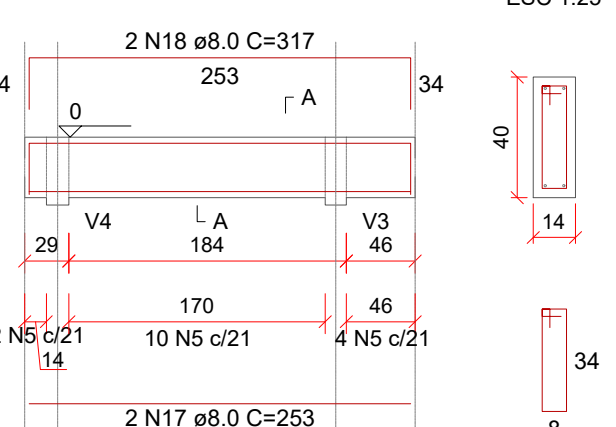
**V22 (12 x 20)**  
ESC 1:50



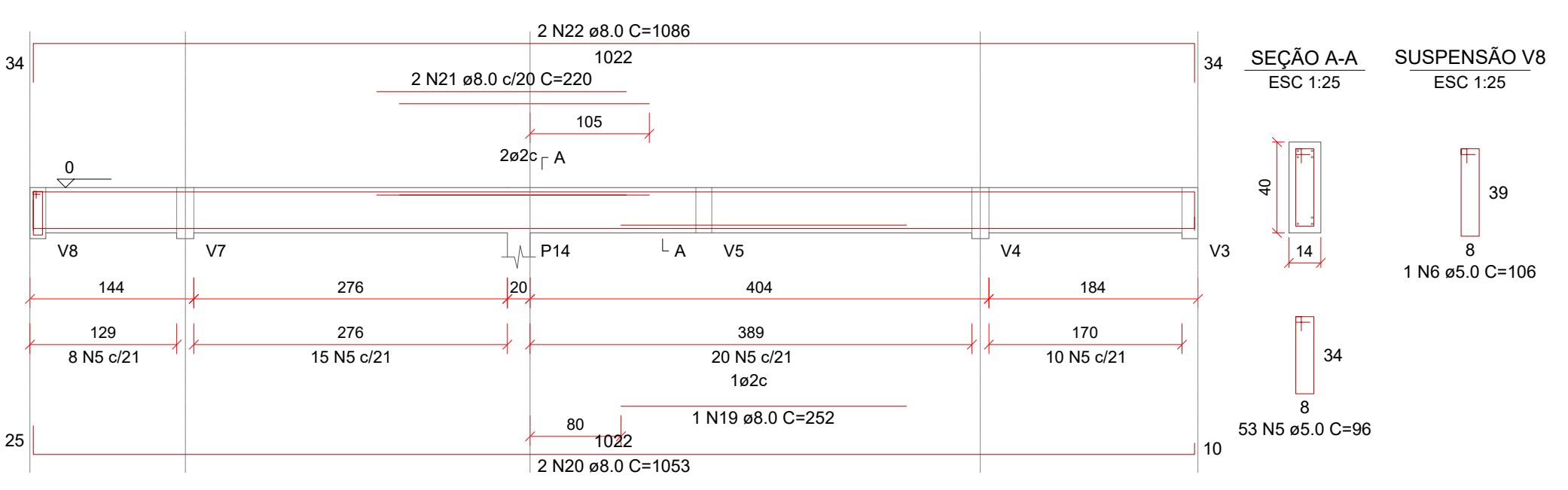
**V23 (12 x 20)**  
ESC 1:50



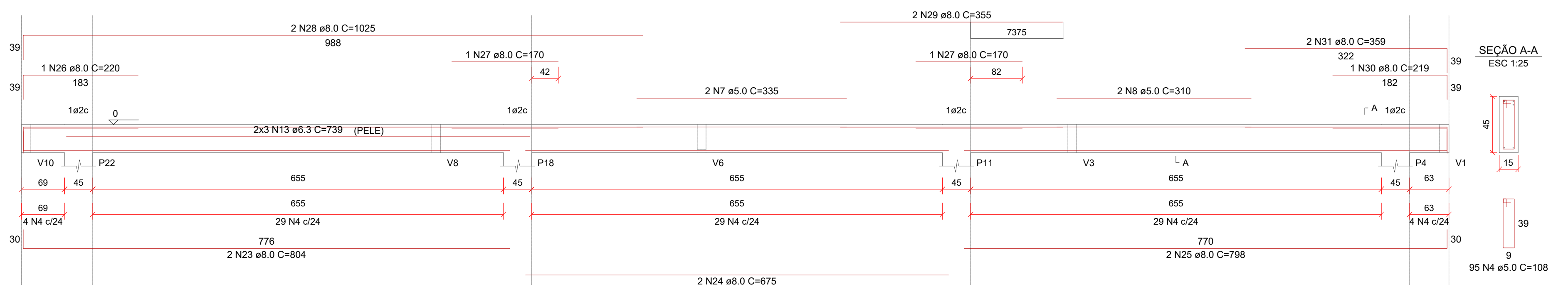
**V24 (14 x 40)**  
ESC 1:50



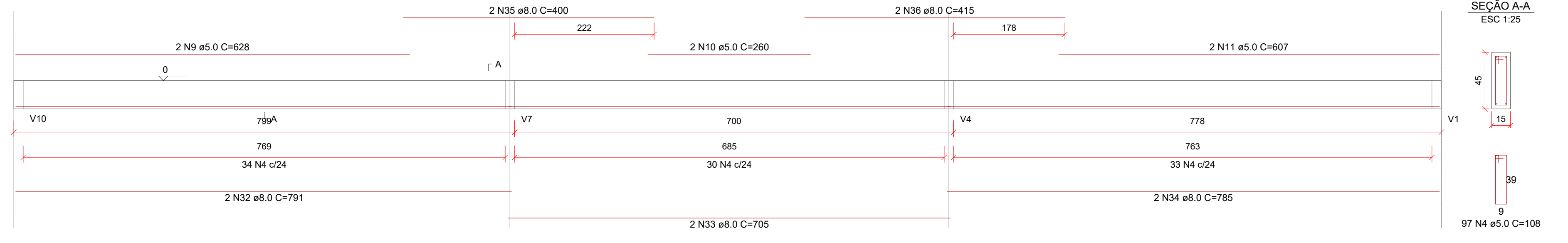
**V25 (14 x 40)**  
ESC 1:50



**V26 (15 x 45)**  
ESC 1:50



**V27 (15 x 45)**  
ESC 1:50



**Resumo do aço**

ACO	DIAM (mm)	C.TOTAL (m)	PESO + 10 % (kg)
CA50	6.3	58.1	15.6
	8.0	234.7	101.8
	12.5	80.7	85.5
CA60	5.0	505	85.6

**PESO TOTAL (kg)**

CA50	202.9
CA60	85.6

Volume de concreto (C-25) = 5.5 m³  
Área de forma = 87.49 m²

C		D	
B		F	
A	ALT.BMC	MAIO/2017	E
O	EM ORIGINAL	DEZ/2016	D
N°	REVISÃO	DATA	N°
MPB SANEAMENTO LTDA		PROJETO	DATA
JANSANA DE LA VILLA DE PAUW ARQUITECTES		DESENHO	DATA
CENTRO EXECUCIONAL DE OBRAS DE SANEAMENTO - FONE: 48 32253682		CONFERIDO	DATA
CRIA: 13887-02/2016 - 02/2016 - 02/2016		APROVAÇÃO	DATA
DATA	ASSINATURA	APROVADO	DATA
	CREA-N°	N° DA CONSULTORA	
<b>DE-13017-EDF-EDP-EST-016-A</b>			
<b>PREFEITURA MUNICIPAL DE TERESINA - PI</b>			
<b>TERESINA - PI</b>			
PROJETOS BÁSICOS E EXECUTIVOS DAS OBRAS DE REQUALIFICAÇÃO URBANA E AMBIENTAL DAS ÁREAS 2,3 E 4, INCLUINDO PLANO DE REASSENTAMENTO, DO MUNICÍPIO DE TERESINA - PI			
<b>RP5 - PROJETO ESTRUTURAL EXECUTIVO</b>			
<b>EDIFÍCIO ADMINISTRATIVO SEM BAR</b>			
<b>ARMAÇÃO VIGAS DE BALDRAME</b>			
PROJETO	VISTOS	DESENHO	DATA
CONDOMÍNIO TERESINA SUSTENTÁVEL		VPW	02/2016
ESCALA		DATA TOB	02/2016
1/50			
			9/12