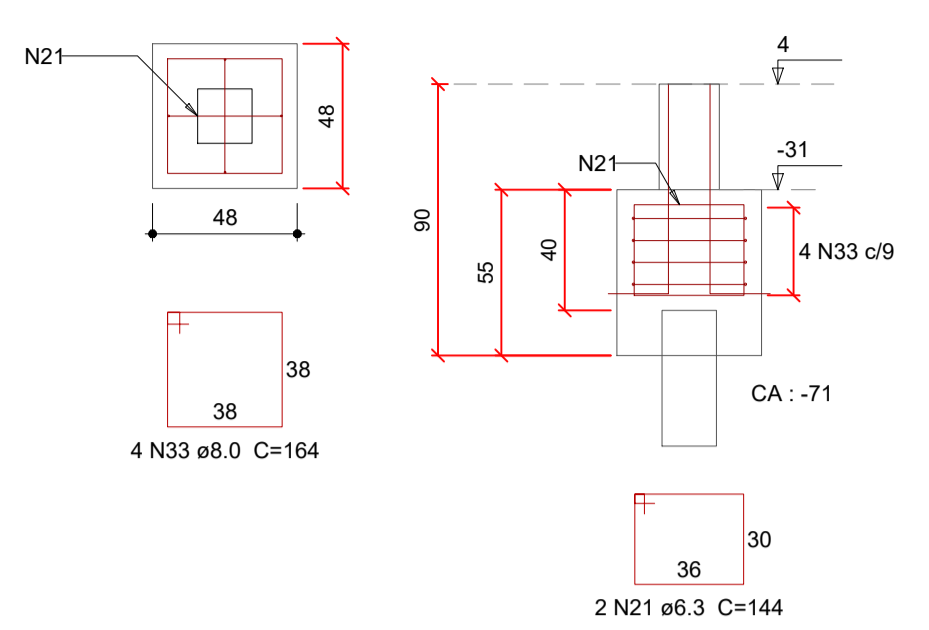
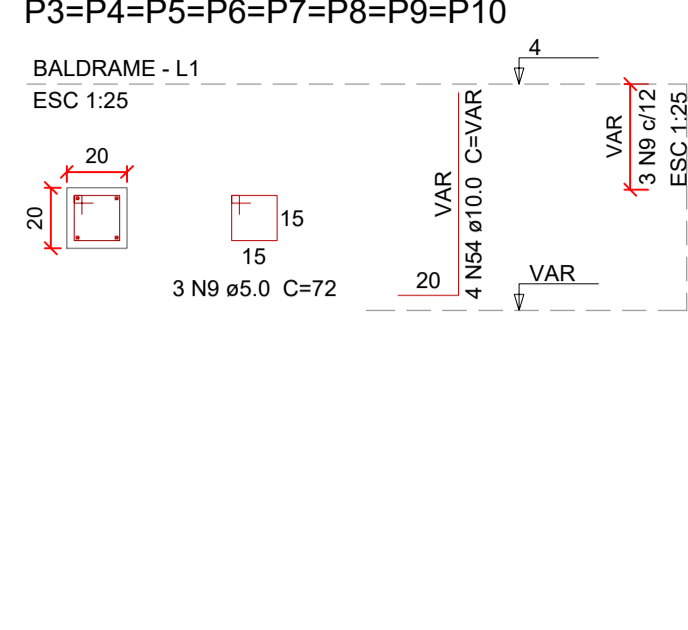


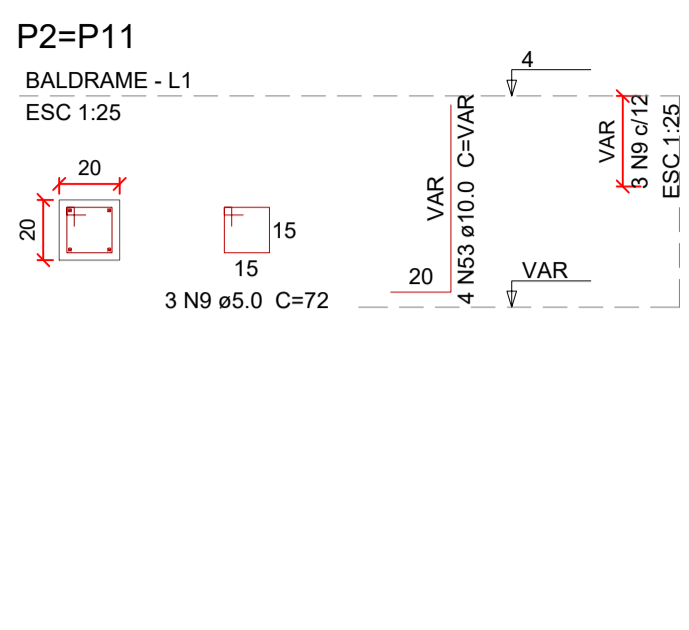
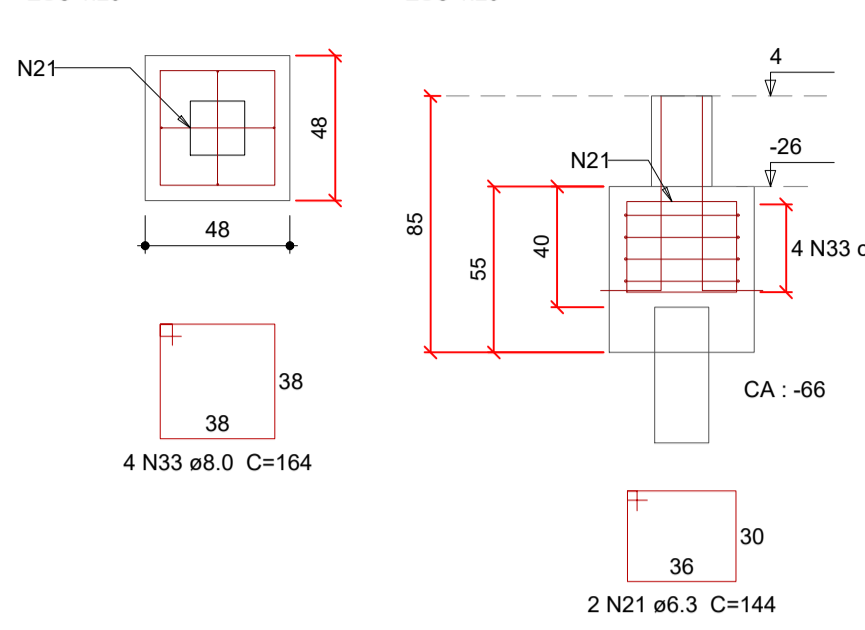
B3=B4=B5=B6=B7=B8=B9=B10
1xR18
PLANTA
ESC 1:25



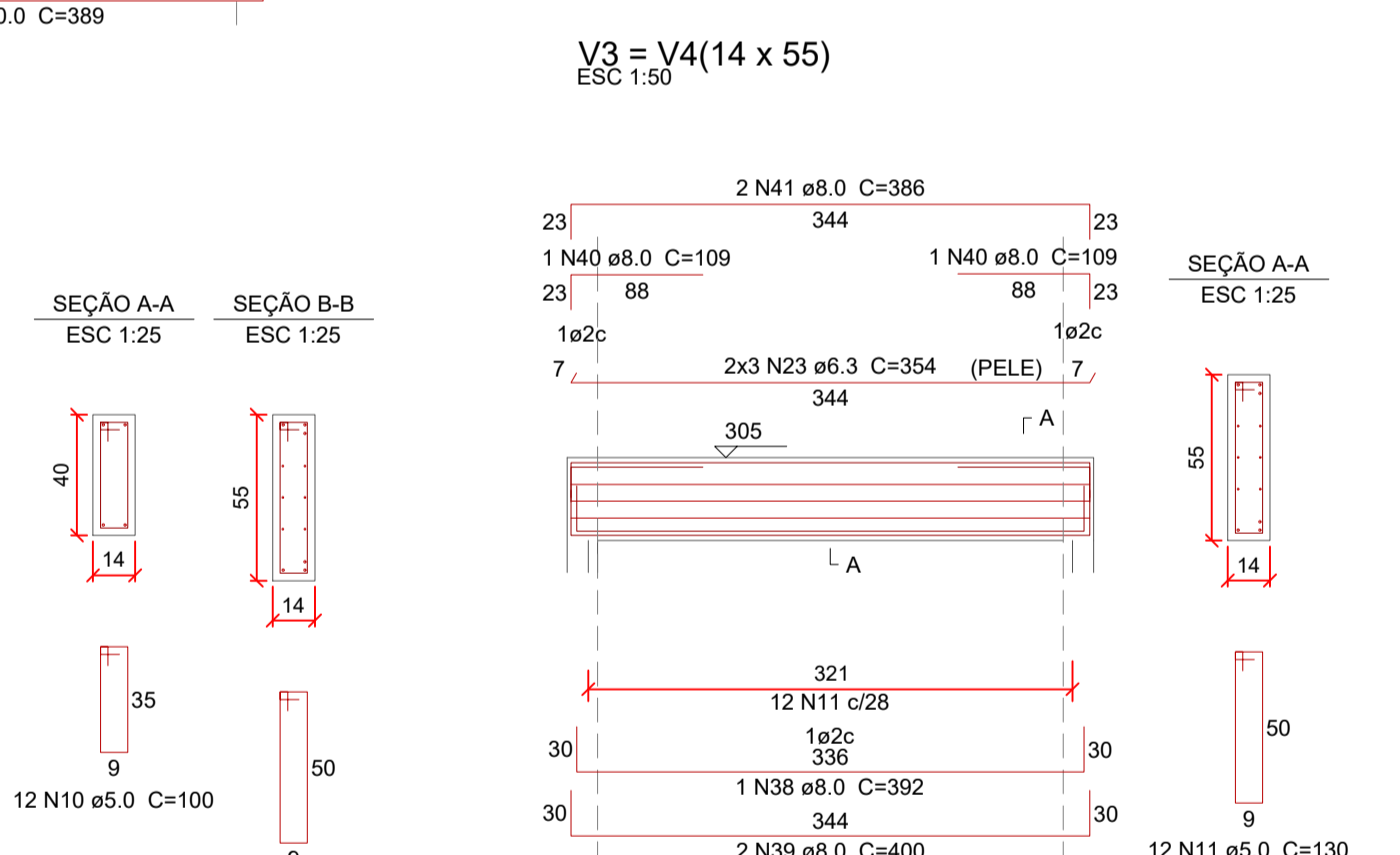
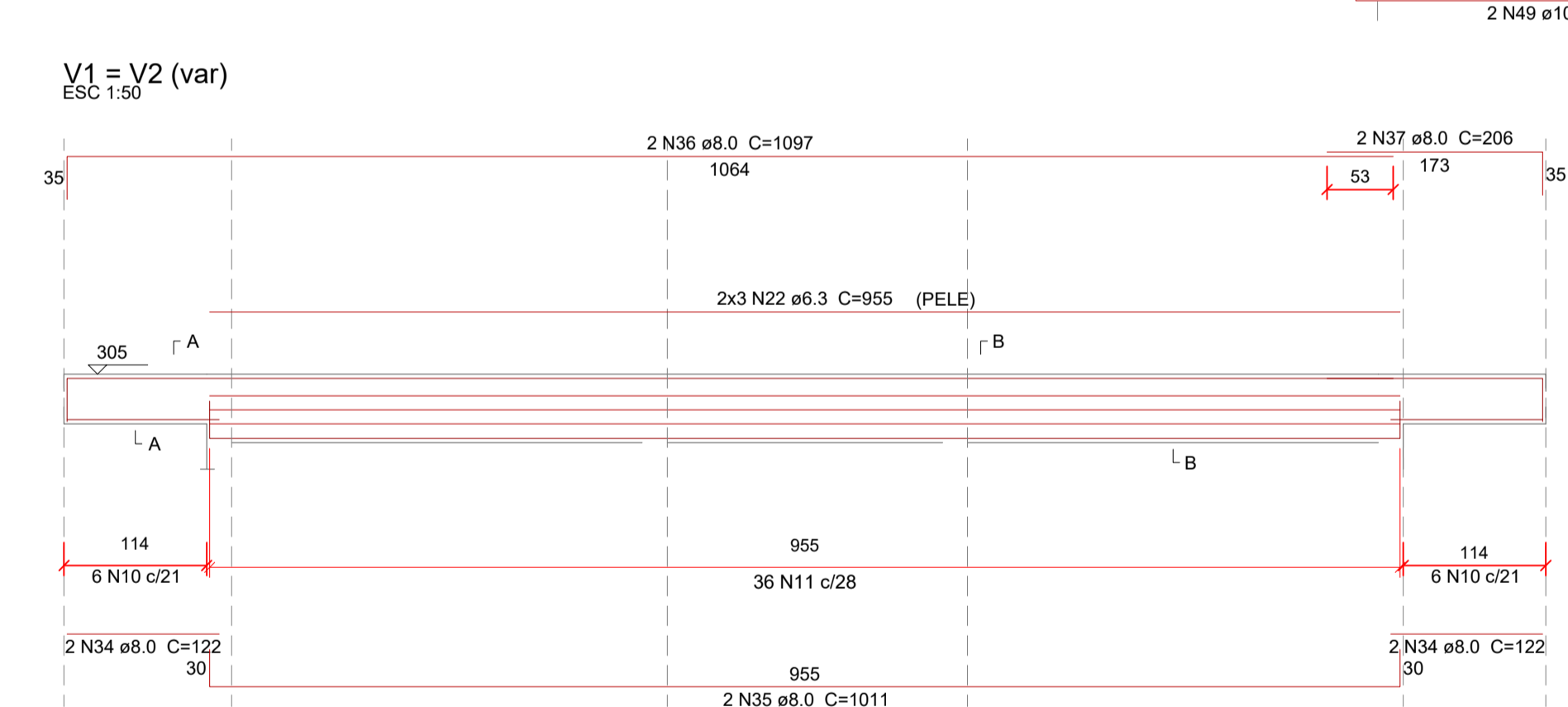
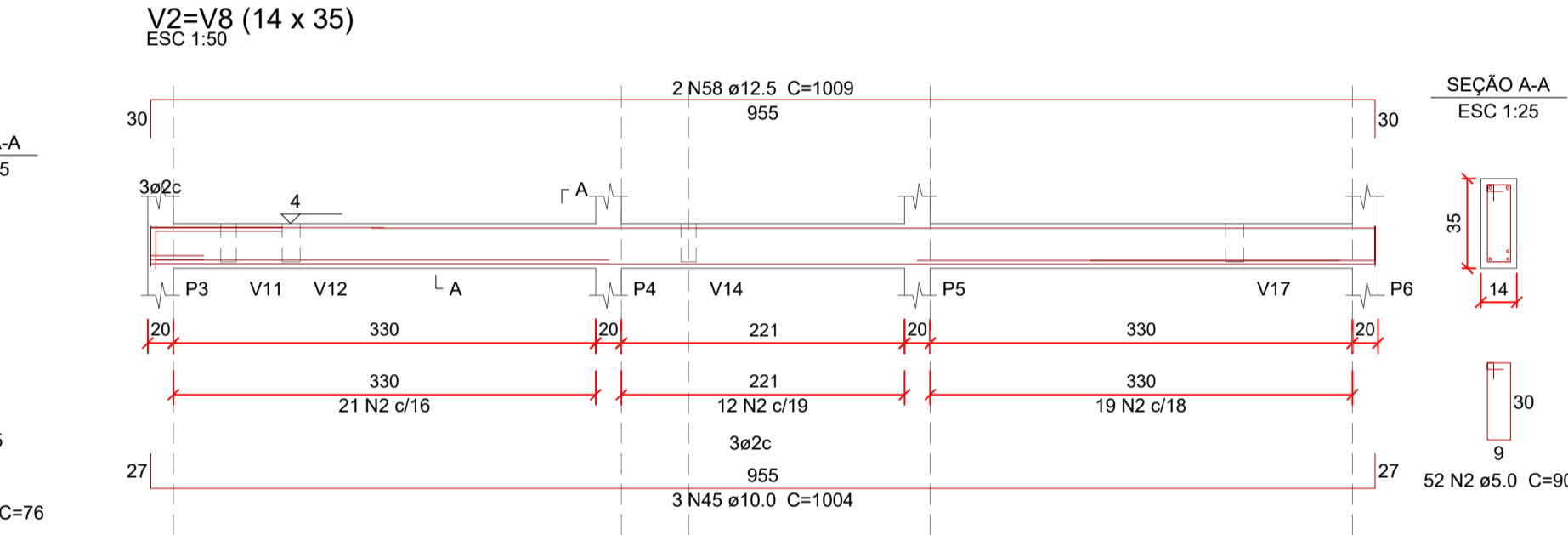
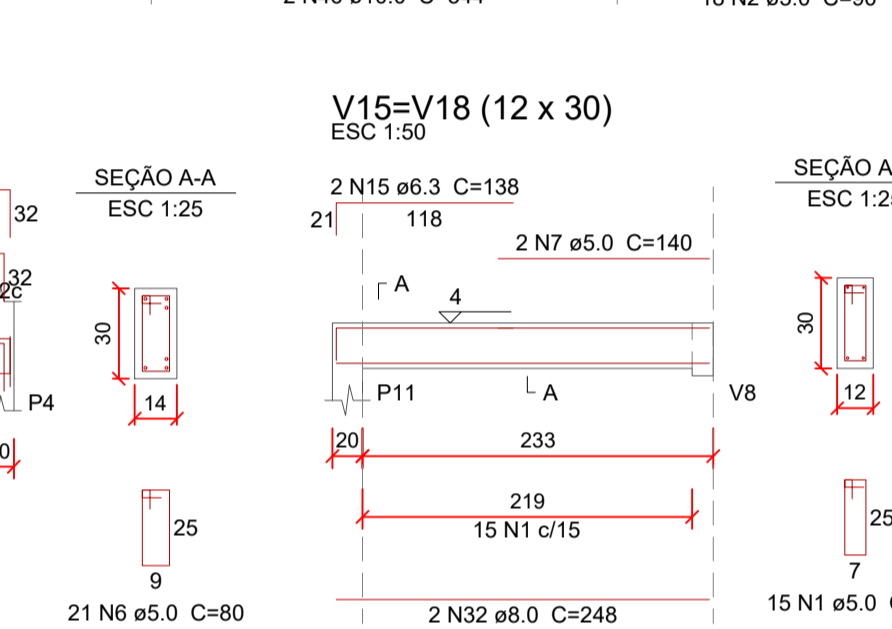
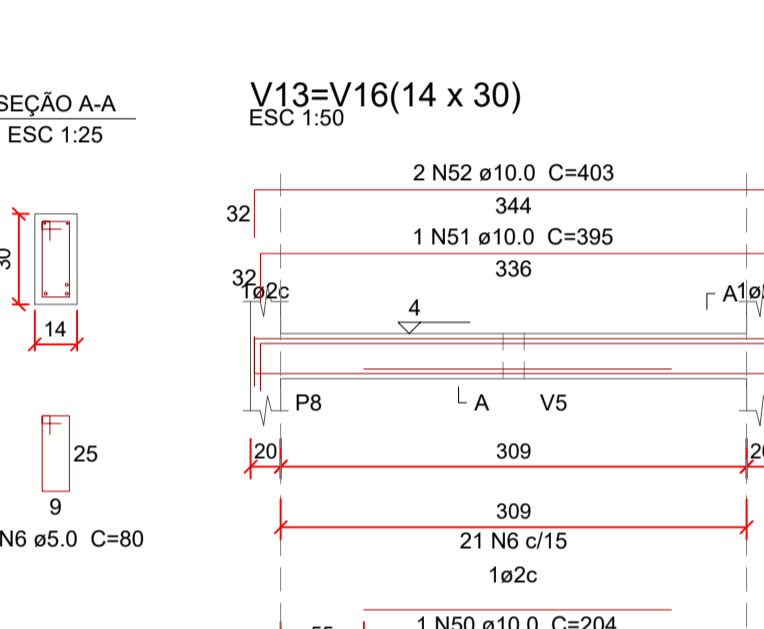
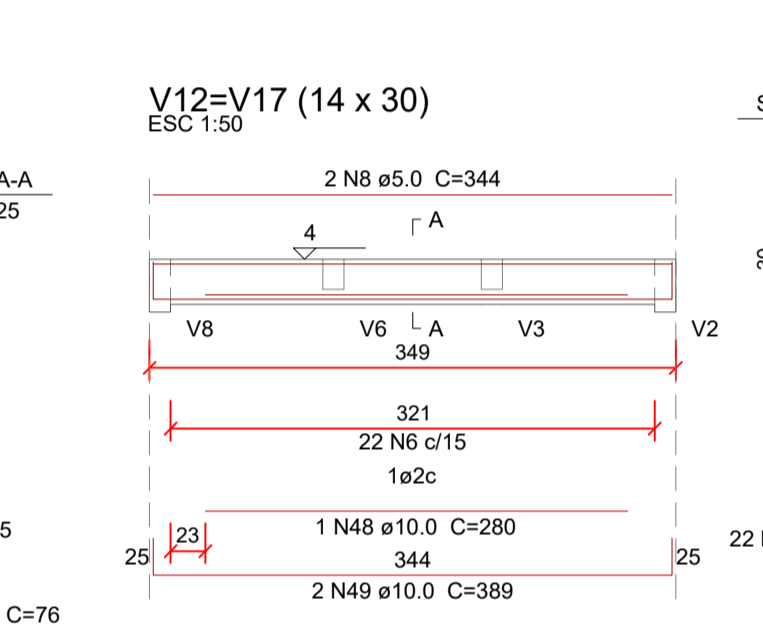
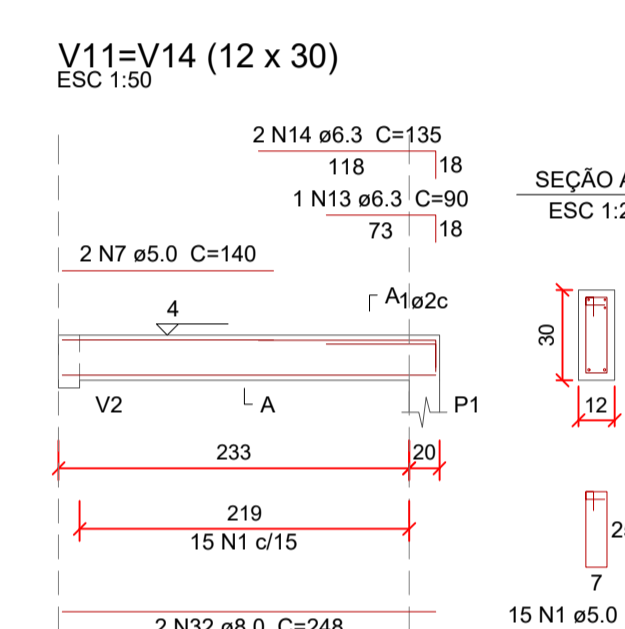
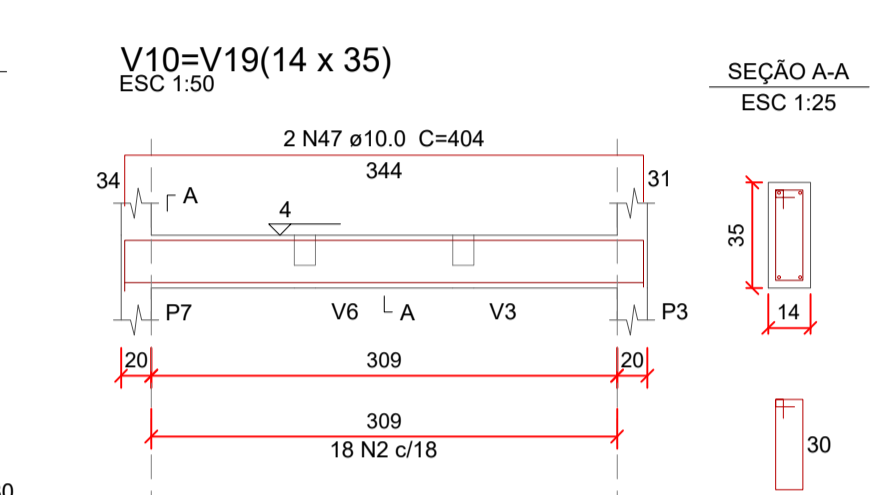
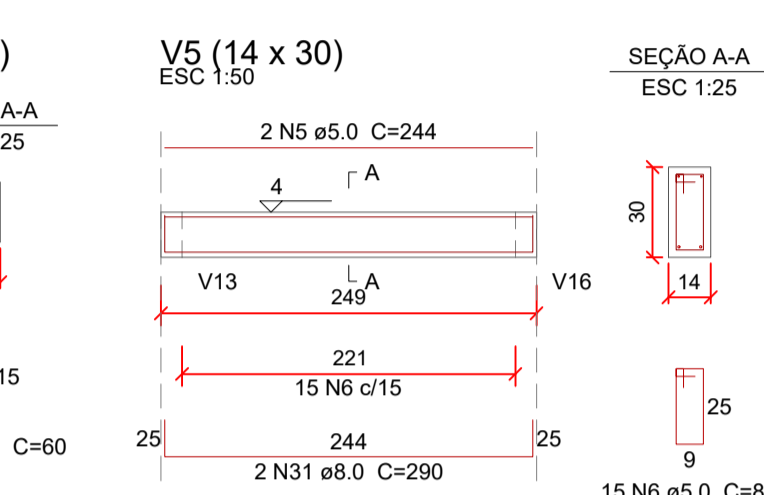
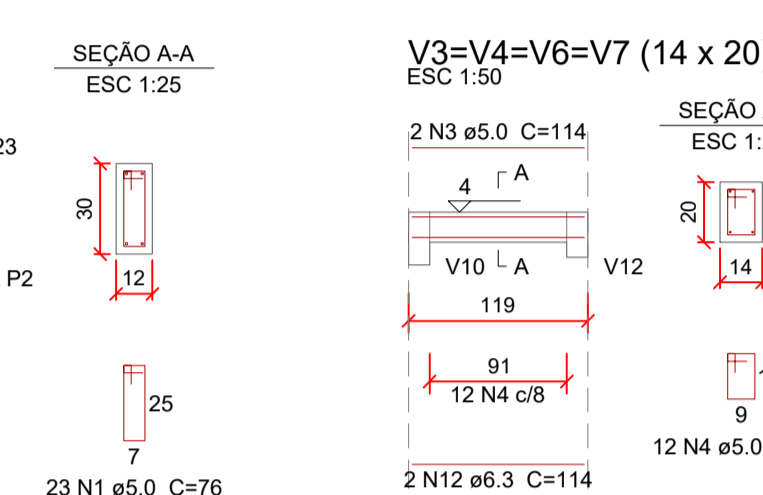
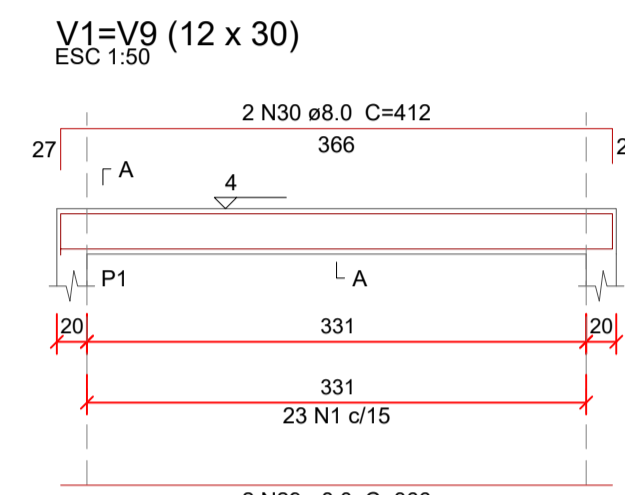
P3=P4=P5=P6=P7=P8=P9=P10



B1=B2=B11=B12
1xR18
PLANTA
ESC 1:25

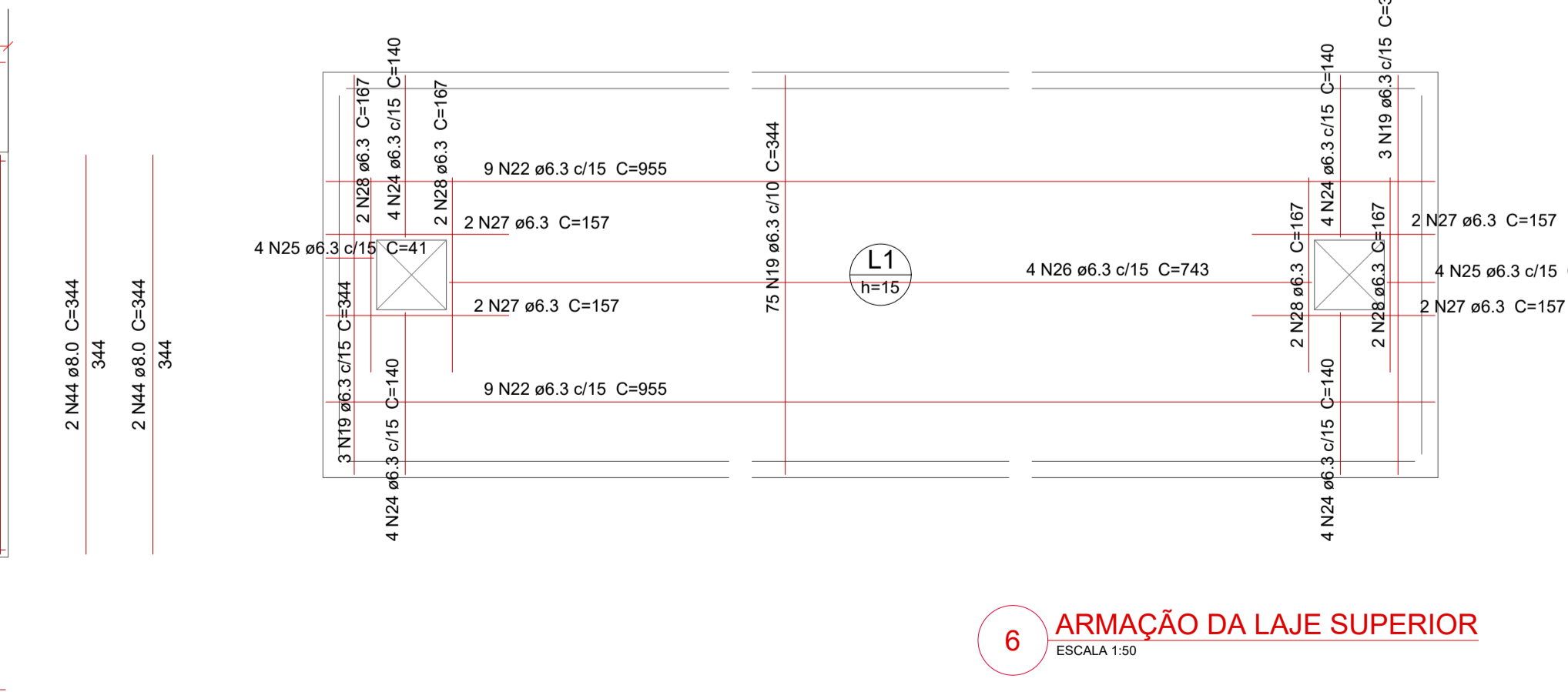
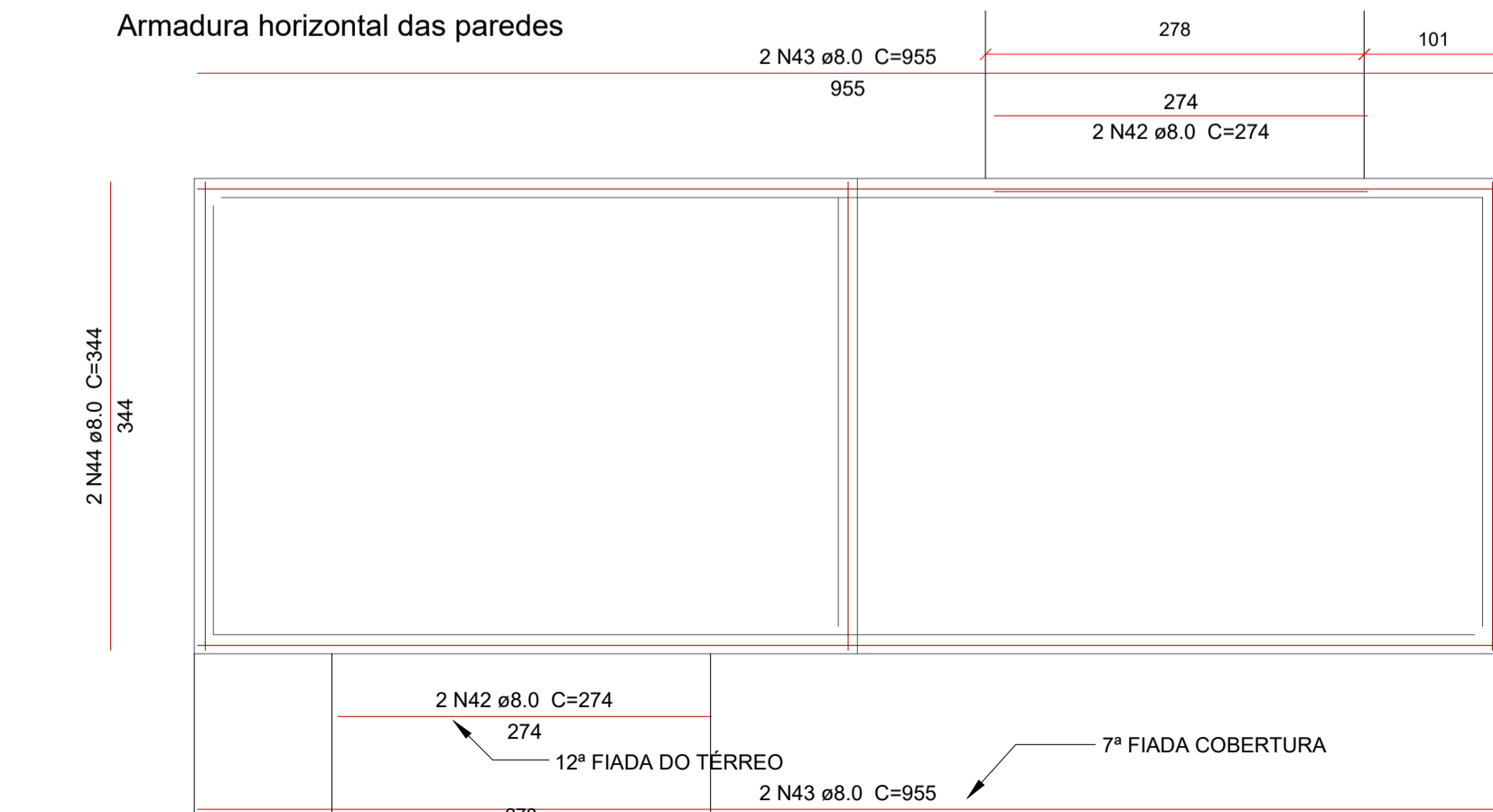
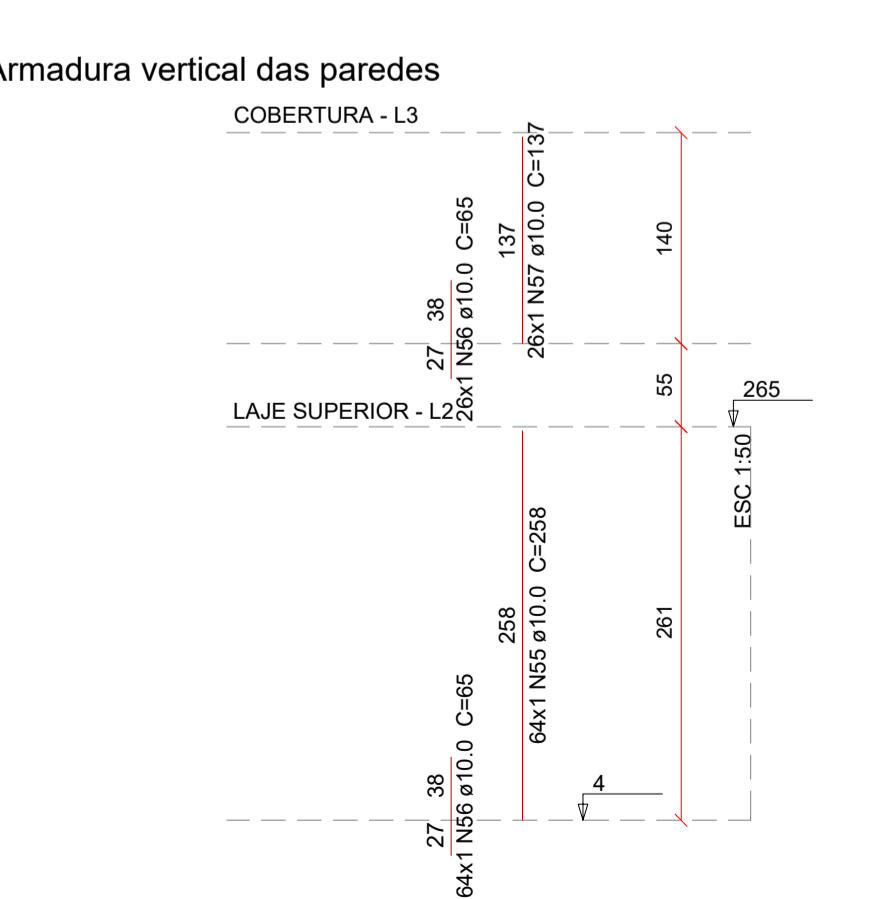


1 ARMAÇÃO DOS BLOCOS DE COROAMENTO DAS ESTACAS
ESCALA 1:25



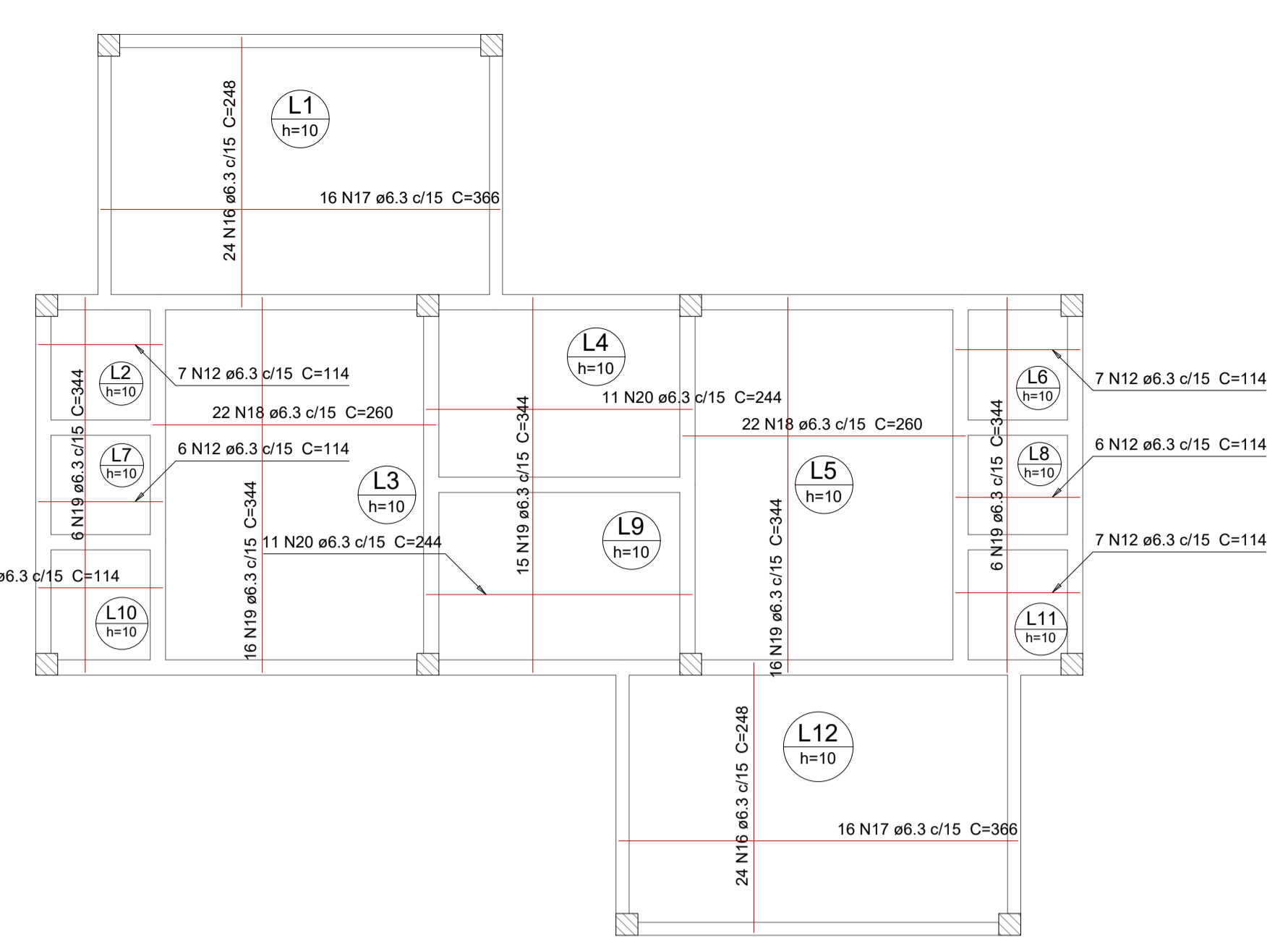
3 ARMAÇÃO DAS VIGAS DE BALDRAME
ESCALA 1:50

4 ARMAÇÃO DAS VIGAS DO PAVIMENTO SUPERIOR
ESCALA 1:50



5 ARMAÇÃO DAS PAREDES
ESCALA 1:50

6 ARMAÇÃO DA LAJE SUPERIOR
ESCALA 1:50



2 ARMAÇÃO DAS LAJES DO PAVIMENTO TÉRREO
ESCALA 1:50

Relação do aço

ACO	N	DIAM (mm)	QUANT	C.UNIT (cm)	C.TOTAL (cm)
CA60	1	6.3	106	76	8056
	2	5.0	140	90	12600
	3	5.0	8	114	912
	4	5.0	48	60	2880
	5	5.0	2	244	488
	6	5.0	101	80	8080
	7	5.0	8	140	1120
	8	5.0	4	344	1376
	9	5.0	36	72	2592
	10	5.0	24	100	2400
	11	5.0	96	130	12480
	12	6.3	48	114	5472
	13	6.3	2	90	180
	14	6.3	4	135	540
	15	6.3	4	138	552
	16	6.3	48	248	11904
	17	6.3	32	366	11712
	18	6.3	44	260	11440
	19	6.3	140	344	48160
	20	6.3	22	244	5368
	21	6.3	24	144	3456
	22	6.3	30	955	28650
	23	6.3	12	354	4248
	24	6.3	16	140	2240
	25	6.3	8	41	328
	26	6.3	4	743	2972
	27	6.3	8	157	1256
	28	6.3	8	167	1336
	29	8.0	4	366	1464
	30	8.0	4	412	1648
	31	8.0	2	290	580
	32	8.0	2	248	496
	33	8.0	48	164	7872
	34	8.0	8	122	976
	35	8.0	4	1011	4044
	36	8.0	4	1097	4388
	37	8.0	4	206	824
	38	8.0	2	392	784
	39	8.0	4	400	1600
	40	8.0	4	109	436
	41	8.0	4	386	1544
	42	8.0	4	274	1096
	43	8.0	4	955	3820
	44	8.0	6	344	2064
	45	10.0	6	1004	6024
	46	10.0	4	344	1376
	47	10.0	4	404	1616
	48	10.0	2	280	560
	49	10.0	8	389	3112
	50	10.0	2	204	408
	51	10.0	2	395	790
	52	10.0	4	403	1612
	53	10.0	16	VAR	VAR
	54	10.0	32	VAR	VAR
	55	10.0	64	258	16512
	56	10.0	90	65	5850
	57	10.0	26	137	3562
	58	12.5	4	1099	4036

Resumo do aço

ACO	DIAM (mm)	C.TOTAL (m)	PESO (kg)
CA50	6.3	1398.2	342.1
	8.0	351.3	136.6
	10.0	454.3	280
	12.5	40.4	38.9
CA60	5.0	529.9	81.7

PESO TOTAL (kg)
CA50 799.6
CA60 81.7

Volume de concreto (C-25) = 15.62 m³
Área de forma = 180.17 m²

REVISÃO	DATA	Nº	REVISÃO
A	ALTERAÇÃO DAS FUNDAÇÕES PARA ESTACAS	JUN/2017	
0	EMISSÃO INICIAL	JAN/2017	
Nº	REVISÃO	DATA	Nº
	MPB SANEAMENTO LTDA / JANSANA DE LA VILLA DE PAUJAU ARQUITECTES	PROJETO	CONS. TERESINA SUSTENTAVEL
	CONTRATO Nº 001/2017	DESENHO	VPW
	CONFERIDO	DATA	JAN/17
	APROVADO	DATA	JAN/17
	APPROVADO	DATA	JAN/17

DE-13017-EDF-EDP-EST-040-A

PREFEITURA MUNICIPAL DE TERESINA - PI

TERESINA - PI

PROJETOS BÁSICOS E EXECUTIVOS DAS OBRAS DE REQUALIFICAÇÃO URBANA E AMBIENTAL DAS ÁREAS 2,3 E 4, INCLUINDO PLANO DE REASSANTAMENTO, DO MUNICÍPIO DE TERESINA - PI

QUIOSQUE MODELO 2 C/ BANHEIRO
PROJETO DE ESTRUTURA DE CONCRETO
LOCAÇÃO E FORMAS

PROJETO C. TERESINA SUSTENTAVEL VISITOS DATA: JAN/2017 FOLHA Nº: 02/02
ESCALA 1:50 TOPOGRAFIA DATA TOP: